



Statement of Qualifications





Introduction

Advanced Communications and Electronics, Inc., a full service communications provider offering service, maintenance, consultation and sales, was formed in 1994 as a customized two-way radio service center specializing in high mountain-top sites, state and local government radio communications system repairs and business radio systems. As the demand for our services grew, so did our organization and the need for another office in Southern New Mexico.

We represent high quality manufacturers of two-way radio communication systems, public safety vehicle packages, satellite telephone services, vehicle tracking, digital telephone systems, wireless in building networks, leased telephone line replacement, microwave and many others.

Our team members are in a constant training mode in order to stay ahead of technology. We are certified in every product offering and have a wealth of knowledge in legacy systems as well.



Resources

Field Service Technicians >

Team of Field Service Technicians that works independently with little or no supervision. They possess superb customer service skills and an ability to diagnose and solve problems from non-technical descriptions provided by customers

Bench Service Technicians >

Team of Bench Technicians who are responsible for diagnosing and repairing both hardware and software malfunctions, as well as maintenance of electronic communications equipment

Mobile Communication Equipment Installer >

Team of installers who are responsible to install a variety of mobile radio communications equipment in various types of motor vehicles. Also diagnoses minor communication system problems, and repairs or replaces malfunctioning equipment

Site Infrastructure Installers >

Team of installers who are responsible for installation of communications equipment to include grounding, pre-wiring, construction, low voltage installation, etc. They possess a keen attention to detail and must understand the overall system architecture

Technical Project Managers >

Team of Project Managers to plan, execute, and finalize projects according to deadlines and within budget. This includes acquiring resources and coordinating the efforts of team members and third party contractors in order to deliver projects according to plan. Project manager will also define the projects objectives and oversee quality control throughout its life cycle.

Pre-sales Engineers >

Team of Pre-sales Engineers to develop technical pre-sales solutions. They coordinate with our sales team in formulating and building up proposal knowledge. They conduct professional demos and presentations for clients, and analyze existing systems and recommend solutions.



Resources

FCC Licensing >

Apply, modify, keep current and validate all FCC Licenses for our clients.

Site Management >

Manage tenants on tower space, conduct tower loading analysis, monitor site activity and provide feedback to site owner.

Ongoing Service Maintenance >

Service, maintain and upkeep all communications equipment operational to current FCC standards.

Credentials

Certified Service Center of New Mexico >

The Certified Service Center (CSC) program is designed as a tool to help consumers find quality service centers, to help electronics manufacturers select service centers for warranty repairs, and to provide a standard for professional service firms that desire to offer outstanding customer service

WMSP >

Charter member Western Motorola Service Provider Association

USMSS/NTSS >

Premier Member since 1994

R56 Certified

ETA Certified Technicians





Capabilities

E911 PSAP equipment installation and maintenance

Simulcast radio

P25 radio systems installation and maintenance

Dispatch center electronics

- > Radio consoles
- > Logging recorder
- > RoIP IP based console
- > POTS / IP telephone
- > CAD / RMS systems installation and maintenance

SCADA

In building coverage enhancement

- > BDA – bi-directional amplifiers
- > Coverage testing and software based predictions

Wireless outdoor and indoor broadband systems design, install and maintenance

Microwave point to point systems design, installation and maintenance

Closed circuit television

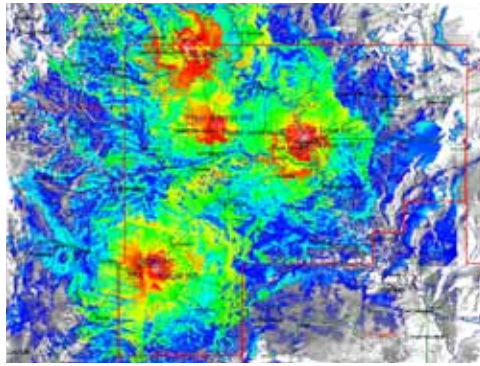
Access control systems

DAS systems implementation

Coverage testing for outdoor and indoor networks

Antenna and line sweep testing

R56 site audits and site upgrades



Capabilities

Vehicular equipment

- > Two way radios
- > Laptops and MDT (mobile data terminals)
- > Vehicular printers
- > GPS vehicle tracking and reporting
- > Sirens / light bars
- > Broadband / wireless modems
- > Stealth / disguise installations and antennas

Bench repairs

- > Mobile, fixed and portable radio equipment

Structured wiring

- > CAT5e / CAT6 LAN
- > DAS (distributed antenna systems)
- > Video (coax or IP)

FCC license service

Fire station alerting systems

Outdoor emergency call boxes (radio, phone line or IP capable)

Outdoor / large area warning siren systems for campuses or production facilities



Recent Projects

Countywide Wireless Broadband Solution

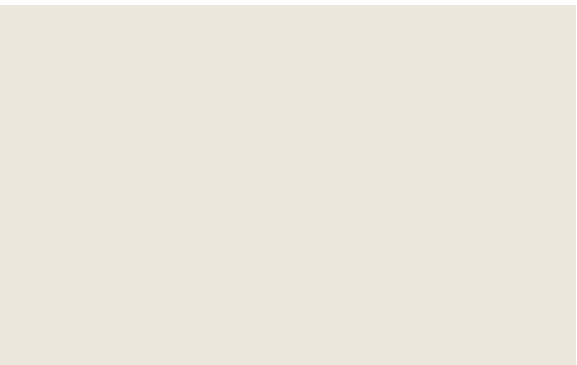
One of the largest counties in New Mexico had the need to connect multiple communication sites with high speed wireless broadband. They had worked with Advanced Communications and Electronics in the past and had confidence that they would receive a solution that would fit their budget, be installed within their timeframe and work continuously. Advanced Communications supplied them with engineering, design, site studies, coverage maps, FCC Licensing, project management, installation and system warranty. We worked closely with our sister company, Advanced Tower Services, Inc. to include construction of multiple towers. This system has allowed the county to offer high throughput internet connections to schools, healthcare offices and various municipal offices located throughout the County. The county's IT Director is able to control bandwidth speed and access to end users.

Multiple Agency Dispatch Center CAD and Records Management Software

In southeastern New Mexico, several cities were dispatching themselves and didn't have a conjoined system that would allow all of the agencies to communicate with each other and share vital information. Moving the main dispatch center from one city to another almost 40 miles away was made easier with the software provided by Advanced Communications. Multiple users were able to access the system at once proving real-time data access as well as the most accurate information available to public safety officers in the field. In addition to providing a single point of access for the agencies to access their records, we were also able to increase the safety of their citizens by keeping this data current and proving links into the State of NM's databases.

Digital Radio System

An electrical coop had the need to narrowband their two-way radio system to meet the federal mandate. Upon meeting with Advanced Communications and Electronics, Inc. it was determined that due to the age of many components in their system, the cost of narrowbanding was almost equal to the cost of a new digital radio system. Advanced Communications designed a Motorola MOTOTRBO system to operate throughout the hundreds of square miles that the coop operates. The coop has the capability to communicate throughout their area of operation from a single dispatch point. The radios are capable of many upgrades such as GPS, work ticket dispatch as well as text messaging.



Equipment

R2600 Service Monitor

Anritsu 331 Site Master

Telewave 44A

Anritsu Spectrum Master

Telesense 2000 (TIMMs set)

Aeroflex 3500 (TRBO Capable)

Aeroflex 2975 (P25 capable)

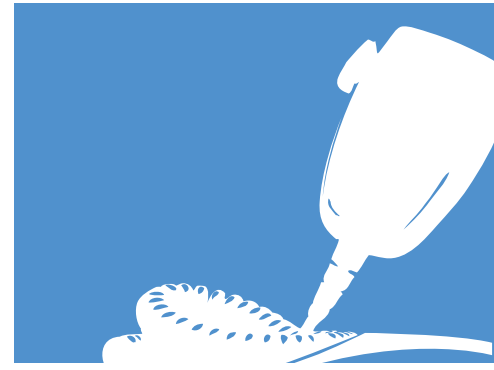
Parascope 2000 WAN Analyzer

Halcyon 704A (T1, Timms)

5350B HP Frequency Counter up to 18 GHZ

435B HP Microwave power meter (TX/RX Levels)

8562A Microwave Spectrum Analyzer up to 18 GHZ



Locations

Albuquerque

2417 Baylor Drive SE
Albuquerque, NM 87106
505.244.3321

Las Cruces

1753-B Buildtek Court
Las Cruces, NM 88005
575.527.4072

Contact

Lori Moore

505.244.3321 ext.122
sales@advtwoway.com